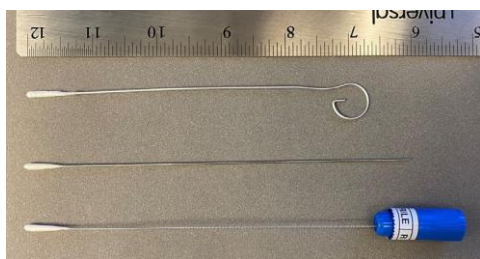


Swab Differences for POC and Standard COVID Testing

Test	Swab	Procedure
COVID-19 standard test	1 Nasopharyngeal swabs (preferred)	Gently advance swab straight back and down along nasal floor into nasopharynx until resistance met (see video for technique). <ul style="list-style-type: none"> Spinswab several times for 10–15 seconds. Withdraw and place into viral transport medium (VTM) or phosphate buffered saline (PBS).
	2 Mid-turbinate swab (if NPS not available)	Direct mid-turbinate swab straight back along the nasal floor until the stopper hits the nostril. <ul style="list-style-type: none"> Spinswab several times for 10–15 seconds Repeat with the same swab on the other side. Place MTS swab into viral transport medium (VTM) or phosphate buffered saline (PBS).
ID NOW COVID-19 (POC test)	3 Foam-tipped nasal swab (comes with the POC test)	Direct nasal swab. Insert nasal swab into the nostril with the most drainage or congestion. <ul style="list-style-type: none"> Gently insert swab, until resistance is met (near the level of the nasal turbinates, less than one inch into nostril). Rotate the swab against the nasal wall several times and gently remove the swab. Using the same swab, repeat sample collection in the other nostril. Perform POCT immediately if on a unit with an ID NOW test device. If no test device on unit, place swab back into plain sterile tube and tighten cap, label tube with patient label, date/time/initials of collector and place specimen biohazard bag. Sample must arrive in micro within 1 hour of collection for test to be performed.



1 Nasopharyngeal swab (NPS)



2 Mid-turbinate swab (MTS)



3 Foam tipped nasal swab